

FABULA

LIVING



COLLECTION 2018



Fabula Living

Fabula Living has established itself as an international design company deeply rooted in traditional techniques, craftsmanship, uncompromising quality and Danish design. We aim to tell stories with our modern rugs by bringing together design, tradition and simple style with the oriental techniques. It's this behind the scenes creative process that makes the designs stand out. Fabula Living is much more than modern interior design. The careful selection of wool, linen, cotton and other raw materials and shades of colour, the passion and patience, the thickness and the details in the weaving are present like invisible threads in all our rugs.



Contents

6	COLLECTION 2018	46	NEW FREJA
8	MADE TO MEASURE	48	ODIN
		50	THOR
10	BETULA	52	LOTUS
12	ULMUS	54	TILIA
14	FAGUS	56	POPPY
16	GORM	58	NIGELLA
18	IRIS	60	ROSEMARY
20	MYRTUS	62	DAPHNE
22	VERONICA	64	CAMELIA
24	LOKE	66	PRIMULA
28	GJALL	68	SALVIA
30	ANGELICA	70	HEIMDAL
32	VIOLA	72	HELGA
34	ERICA		
36	FENRIS	74	UNDERLAY
38	BALDER	74	HOW TO CARE
40	ELLI	75	MADE TO MEASURE
42	TANNE	75	CERTIFICATES
44	GIMLE		



Collection 2018

CLOSER TO NATURE

Refined simplicity, classic with a twist, quality and craftsmanship - and one step closer to nature. The 2018 collection pays homage to the very foundation of Fabula Living's design ethos.

Inspired by natural landscapes, the eight new designs go from subtle neutrals, black, grey and charcoal to a few highlight tones like alluring warm terracotta and petrol green.

As always, the collection reflects an uncompromising desire to make new ideas come alive with the very best quality and as naturally as possible. Some of the most stunning designs are born out of extensive testing, which has led the designers to add a new material to the collection.

We are introducing exquisite new designs in paper yarn kept in understated patterns and subdued natural hues to amplify this technique's quality to blend in with nature.

The extremely strong and durable paper yarn rugs are underlined by the same devotion to craftsmanship and excellent quality as our hand-woven pure wool and linen rugs.

Both of the new design lines add even more refined beauty to the collection. All the rugs are simple and versatile enough to complement any style and bring the dream of being closer to nature into modern homes.

Made to measure

The perfect rug is a combination of beautiful texture, distinctive pattern, with rich colours or earthy natural tones that accentuate and complement the style in your home.

We have found that the right fit makes all the difference and knowing that a rug has the power to transform a room, we offer most of our designs in bespoke sizes.

When you are looking to link together your sofas, need a little elegant square in a particular place or would like to fit your dining table and chairs on a rug without it looking cramped, you can order most of our rugs in your desired size. Our designs can be varied in measurement, from a small 2 m2 rug, to larger rugs up to 4.5 m wide and 10 metres in length.

If the space needs a soft contrast, we can also make selected lines as circular rugs, which can make a room seem more spacious. We are dedicated to perfecting, refining and adding on to our selection of classic, contemporary designs and when it comes to size, we offer even more choices and flexibility.

For further details please check page 75.



Betula

Design Lisbet Friis

Woven rug in paper yarn with 3mm woolen felt backing

170x240, 200x300 cm

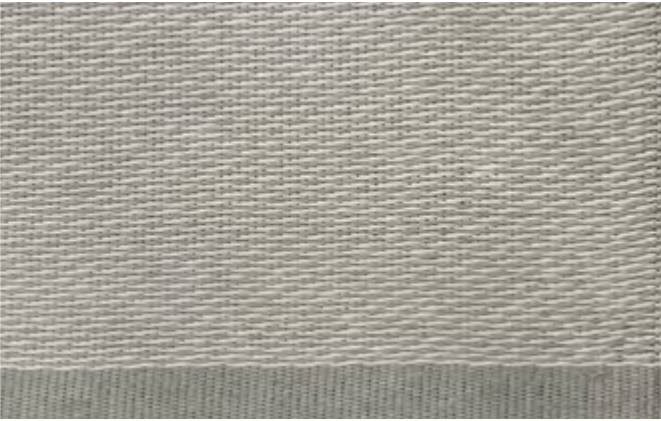
Simple and natural. The perfect weave and the understated natural beauty created when weaving with paper yarn is manifested in the Betula design. This durable and natural material, also used in the Ulmus and Fagus lines, make the subtle, natural colours come out very matte, dry and as close to nature's as possible.



1211 BEIGE/OFF WHITE



1416 CHARCOAL/GREY



1627 GREY/LIGHT GREY





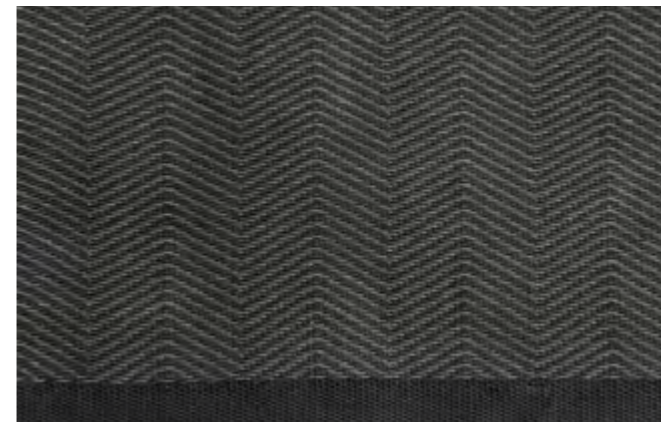
Ulmus

Design Lisbet Friis

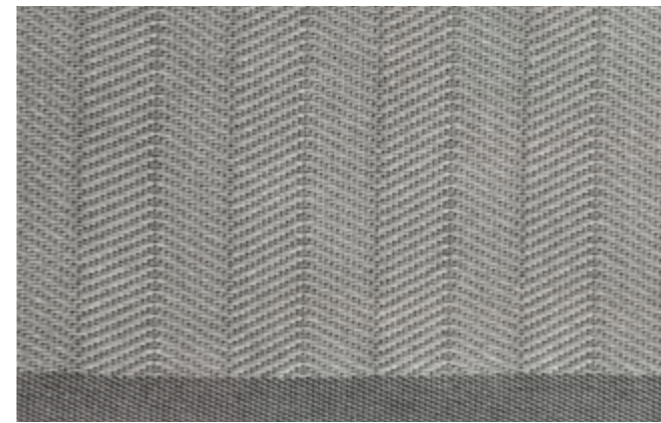
Woven rug in paper yarn with 3mm woolen felt backing

170x240, 200x300, 250x350 cm

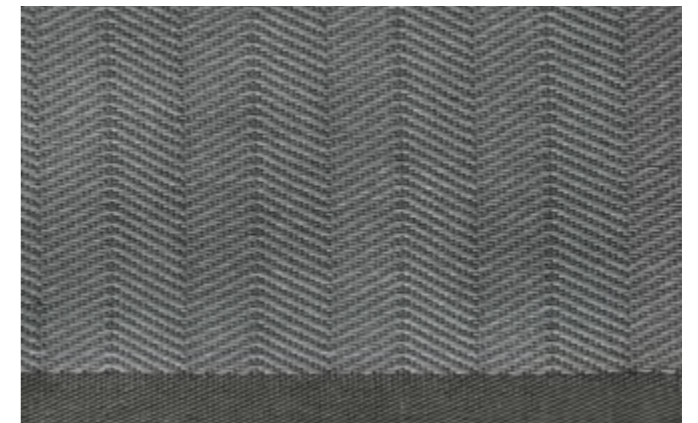
With shades of grey and very subtle patterns, the Ulmus design offers a calm, stylish and natural look for any modern home. Just like Fagus and Betula in the same line, this rug is woven with the exquisite paper yarn on felt back. This is as natural as it gets, making this a strong, easy to care for and beautiful rug.



1414 CHARCOAL



2727 LIGHT GREY



1616 GREY

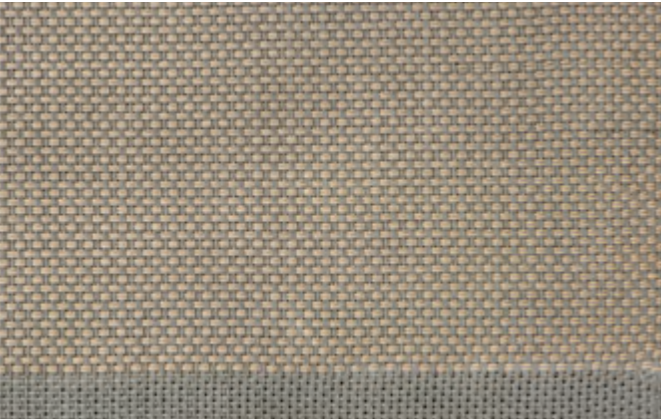
Fagus

Design Lisbet Friis

Woven rug in paper yarn with 3mm woolen felt backing

170x240, 200x300, 250x350 cm

With exquisite simplicity and natural material, the Fagus design brings a breeze of nature into the home. The fine natural feel has been amplified by using only neutral hues as grey, charcoal, nature and beige. Woven with paper yarn on a felt back, this rug has a very refined and flat surface with a lively shadow effect in the weave. Being able to weave with one strong thread, makes this rug extremely strong and practical.



1612 GREY/BEIGE



1416 CHARCOAL/GREY



1425 CHARCOAL/NATURE





Gorm

Design Jens Landberg Schrøder

Hand-woven rug in New Zealand wool and linen on cotton warp

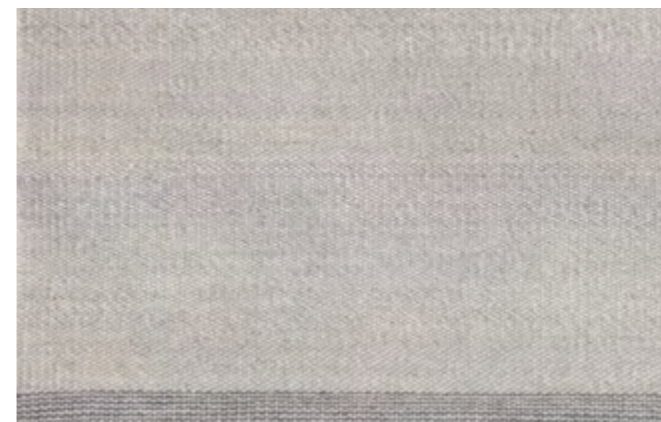
140x200, 170x240, 200x300 cm

Made to measure

With a pattern inspired by a maths matrix this rug suits the clean-lined and cubistic design favoured in many modern homes. The wool has a flaming expression thanks to the special Gabbeh dye, which only partly colours the wool. Pure linen has been woven into the mix making it a tight and extremely durable rug, which comes in beautiful classic charcoal and light grey.



1414 CHARCOAL



2727 LIGHT GREY

Iris

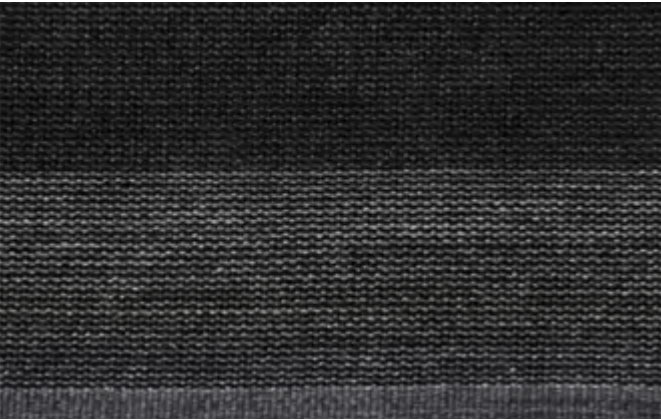
Design Lisbet Friis

Hand-woven rug in New Zealand wool on cotton warp

140x200, 170x240, 200x300 cm

Made to measure

Warm and dark or light and bright stripes. This hand-woven contemporary, classic rug comes in three colour combinations capturing the essence of nature’s darkness and lightness. Just like the sister designs of Myrtus and Veronica, the pattern creates its own simple rhythm. The Gabbeh-dyeing technique and the colours bring a vibrant lively touch to a very subtle and elegant style.



1415 CHARCOAL/BLACK



1517 BLACK/BLUE



1627 GREY/LIGHT GREY





Myrtus

Design Lisbet Friis

Hand-woven rug in New Zealand wool on cotton warp

140x200, 170x240, 200x300, 250x350 cm

Made to measure

This clean, definitive yet exciting square pattern in this hand-woven New Zealand rug is the result of a careful visual balancing act. Precise play with colours, pattern and the special Gabbeh-dye bring the tiny little squares alive – changing in appearance from textural shimmering to a solid shade. Just like the sister designs of Iris and Veronica, this rug is a very simple, classic style with a vibrant lively touch.



1514 BLACK/CHARCOAL



1529 BLACK/MIDNIGHT BLUE



1516 BLACK/GREY

Veronica

Design Lisbet Friis

Hand-woven rug in New Zealand wool on cotton warp

80x240, 140x200, 170x240, 200x300 cm

An inviting play with patterns guided by a carefully selected palette of strong calming indigo, deep midnight blue and black make this hand-woven rug in New Zealand wool a beautiful and classic design. Quietly saluting the Swedish rag rugs, Veronica brings an instant feel of style and comfort to a room. Like the sister designs of Iris and Myrtus, this is a simple, contemporary style with refined pattern and a three-dimensional visual effect thanks to the special Gabbeh-dye technique.



1717 BLUE



1717 BLUE





Loke

Design Jens Landberg Schrøder

Hand-loom pile rug in New Zealand wool on cotton warp

170x240, 200x300, 250x350 cm

Made to measure

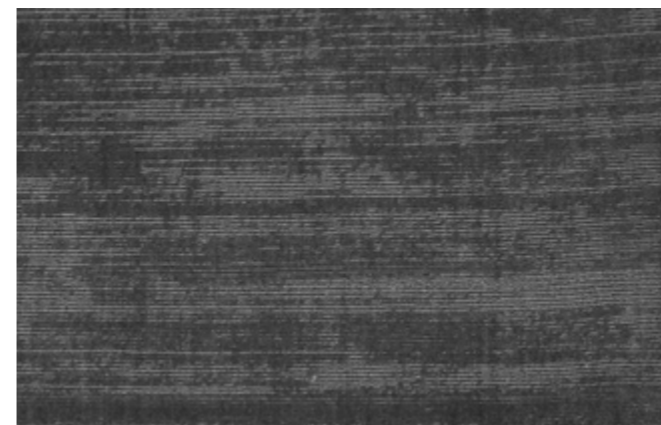
A modern piled rug, made in the finest New Zealand wool, which has a shiny and intense two-toned shimmer despite being uni-coloured. After weaving, the loops have been partly cut using a shaving technique, which has softened the surface and created the enhanced expression of colours. Comes in classic charcoal, grey, warm terracotta and dusty petrol green.



2020 TERRACOTTA



4848 PETROL



1616 GREY



1414 CHARCOAL



Gjall

Design Jens Landberg Schrøder

Hand-woven highpile rug in viscose on cotton warp

160X230, 200X300 CM

Made to measure

This very thick, pure viscose high-pile rug is the essence of cosy. The three-dimensional shading effect enhances the softness and the expression of colours, which like a natural landscape go from subtle neutrals off white, grey, charcoal to a highlight tone like petrol green.



1010 WHITE



1212 BEIGE



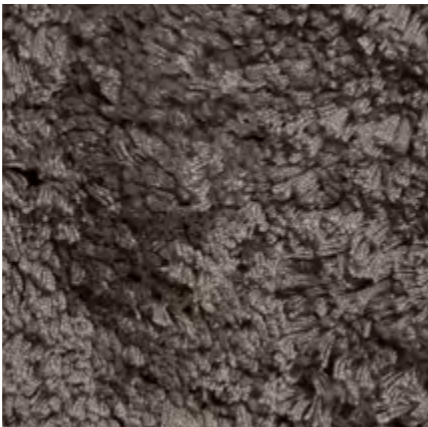
1313 BROWN



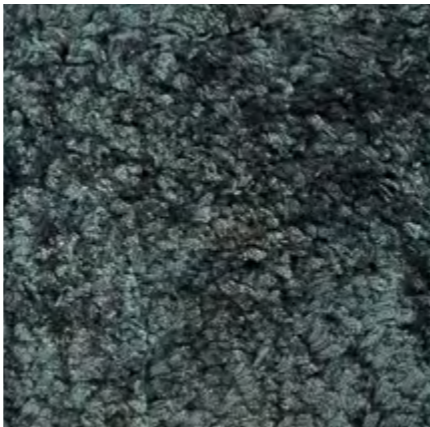
1414 CHARCOAL



1616 GREY



3939 DARK BEIGE



4848 PETROL





Angelica

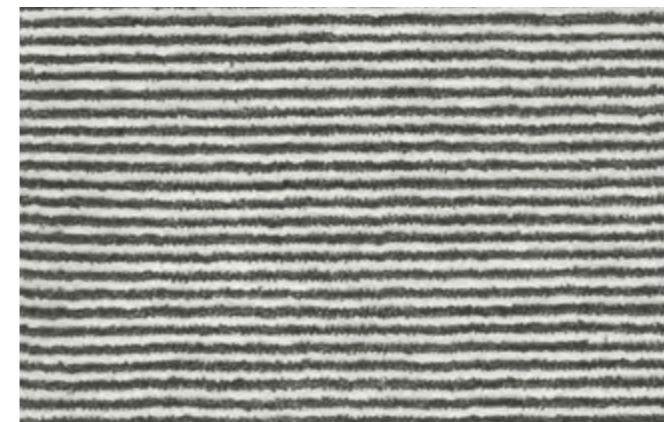
Design Lisbet Friis

Hand-loom pile rug in New Zealand wool and viscose

140X200, 170X240, 200X300 CM

Made to measure

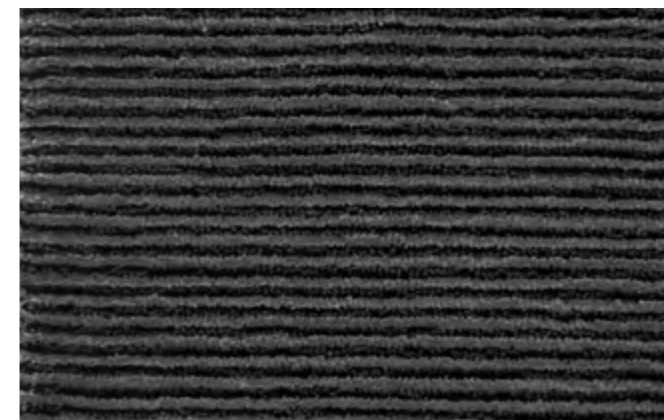
The combination of viscose mixed with the wool and the beautiful colours created by the special hand dye technique 'Gabbeh-dye' creates a soft shimmer that looks almost like velvet. The Angelica hand-made rugs comes in the same shades of off white, grey and black as Erica and Viola.



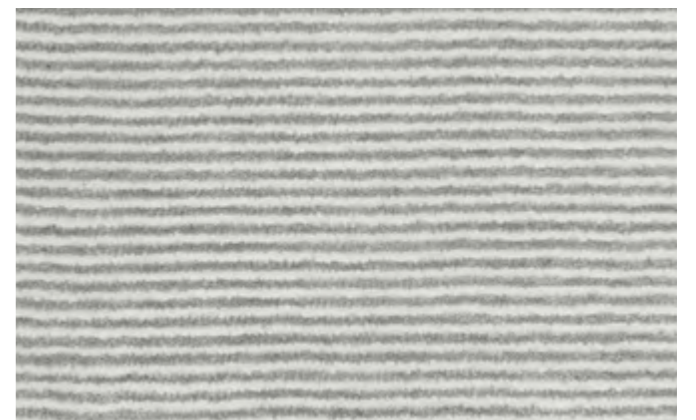
1411 CHARCOAL/OFF WHITE



1416 CHARCOAL/GREY



1615 GREY/BLACK



2711 LIGHT GREY/OFF WHITE

Viola

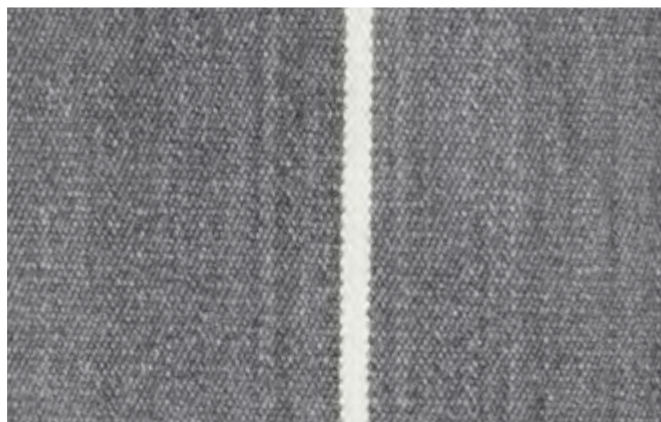
Design Lisbet Friis

Hand-woven rug in New Zealand wool on cotton warp

140X200, 170X240, 200X300 CM

Made to measure

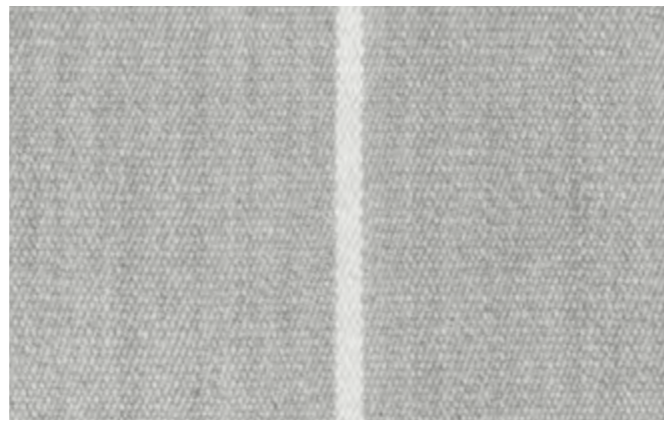
Shades of soft grey and pale blue make the Viola design stand out. The dip dye technique 'Gabbeh-dye' has given the wool extraordinary shimmering colours. Viola comes in the same colours as Erica and Angelica, making the three styles suitable for mixing and matching in the same room or throughout your home.



1411 CHARCOAL/OFF WHITE



3811 LIGHT BLUE/OFF WHITE



2711 LIGHT GREY/OFF WHITE





Erica

Design Lisbet Friis

Hand-woven rug in New Zealand wool on cotton warp

140X200, 170X240, 200X300, 250X350 CM

Made to measure

The thin stripes and the elegant shimmering created by the special dip dye technique 'Gabbeh-dye' distinguish this subtle playful rug. As part of the same family as Viola and Angelica this style works well if you want different hand-made rugs in a matching colour scheme of shades of grey and light blue tones.



1411 CHARCOAL/OFF WHITE



1516 BLACK/GREY



2711 LIGHT GREY/OFF WHITE



3811 LIGHT BLUE/OFF WHITE

Fenris

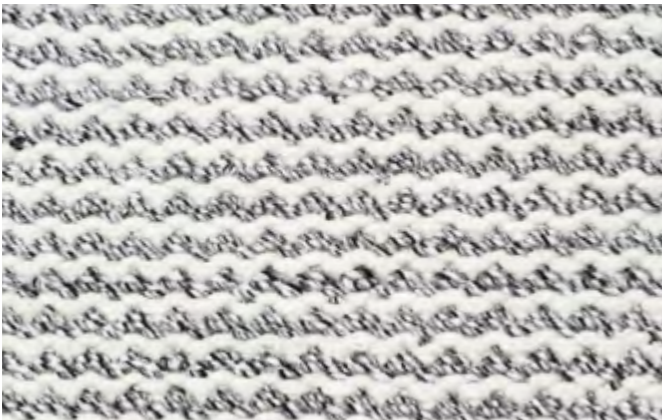
Design Jens Landberg Schrøder

Hand-woven rug in New Zealand wool and raw wool on cotton warp, reversible

140X200, 170X240, 200X300, 250X350 CM

Made to measure

This slightly rustic hand-woven rug in a thick quality with a soft natural colour scheme is a very harmonic design, complimenting different types of wood and styles in a home. The tones and texture come out intentionally irregular thanks to the combination of a shimmering hand-spun natural wool yarn and pure New Zealand wool.



1116 OFF WHITE/GREY



1629 GREY/MIDNIGHT BLUE



1525 BLACK/NATURE



1125 OFF WHITE/NATURE





Balder

Design Jens Landberg Schrøder

Hand-woven rug in New Zealand wool and linen on cotton warp, reversible

140x200, 170x240, 200x300 cm

Made to measure

A simple and sophisticated rug using hand-spun high quality yarn. Mixing wool and linen in a very tight weave gives the classic goose eye pattern deliberately a slightly worn surface suggesting that this rug will only become more beautiful with time.



1629 GREY/MIDNIGHT BLUE



1516 BLACK/GREY



1627 GREY/LIGHT GREY

Elli

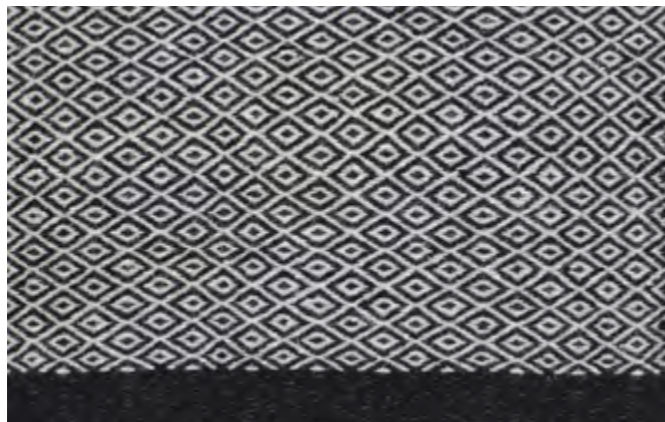
Design Jens Landberg Schrøder

Hand-woven rug in New Zealand wool and linen on cotton warp, reversible

140x200, 170x240, 200x300 cm

Made to measure

This high-quality rug using hand-spun yarn is made by the same method as Balder. Wool and linen are mixed in a very tight weave giving deliberately a slightly worn surface suggesting that this rug will only become more beautiful with time. The classic goose eye pattern has been broken and the design defined by crossing stripes.



1516 BLACK/GREY



1627 GREY/LIGHT GREY





Tanne

Design Jens Landberg Schrøder

Hand-woven rug in New Zealand wool on cotton warp, reversible

140x200, 170x240, 200x300 cm

Made to measure

This reversible hand-woven rug in pure New Zealand wool fuses a simple contemporary pattern, soft colours and exquisite quality. This very durable rug comes in five different colour combinations, blending natural hues.



1015 WHITE/BLACK



1510 BLACK/WHITE



1113 OFF WHITE/BROWN



1610 GREY/WHITE



1016 WHITE/GREY

Gimle

Design Jens Landberg Schrøder

Hand-woven rug in New Zealand wool on cotton warp, reversible

140x200, 170x240, 200x300 cm

Made to measure

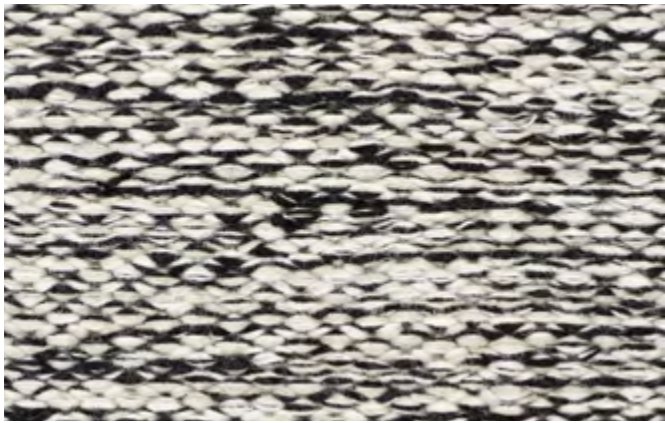
A shimmering look brings out the two shades creating a stunning visual. This is the thickest flat pile rug in the collection and is extremely versatile when decorating a home.



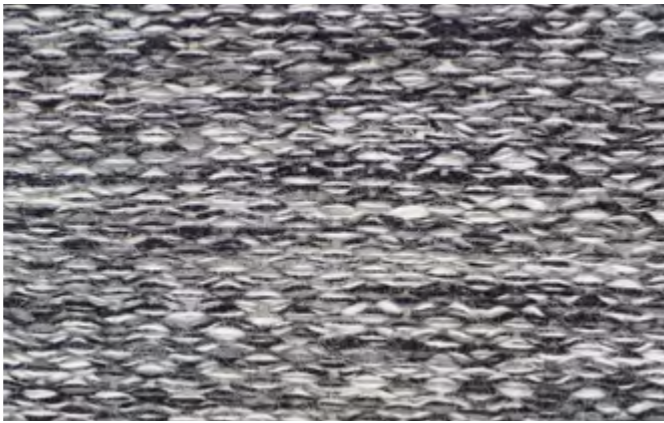
1011 WHITE/OFF WHITE



1211 BEIGE/GREY



1215 OFF WHITE/BLACK



1511 BLACK/OFF WHITE





New Freja

Design Jens Landberg Schröder

Hand-woven rug in New Zealand wool on cotton warp, reversible

140x200, 170x240, 200x300 cm

Made to measure

One of the pure New Zealand wool rugs, hand-woven and made in a classic simple pattern that stands out and also blends in a modern home. The colours are a classic, natural mix of brown, grey and soft natural beige and off white.



1013 WHITE/BROWN



1616 GREY



1025 WHITE/NATURE

Odin

Design Jens Landberg Schrøder

Hand-knotted pile rug in New Zealand wool and linen on cotton warp

170x240, 200x300 cm

Made to measure

Using old Nepalese techniques this thick pile and loop rug has been hand-knotted in New Zealand wool and linen and some of the loops have then been cut creating the unique surface. The signature blend of quality yarn makes Odin a classic in our collection and the gentle two-toned shimmering softens the graphic look.



1214 BEIGE/CHARCOAL



1615 GREY/BLACK





Thor

Design Jens Landberg Schrøder

Hand-woven highpile rug in New Zealand wool on cotton warp

160x230, 200x300 cm

Made to measure

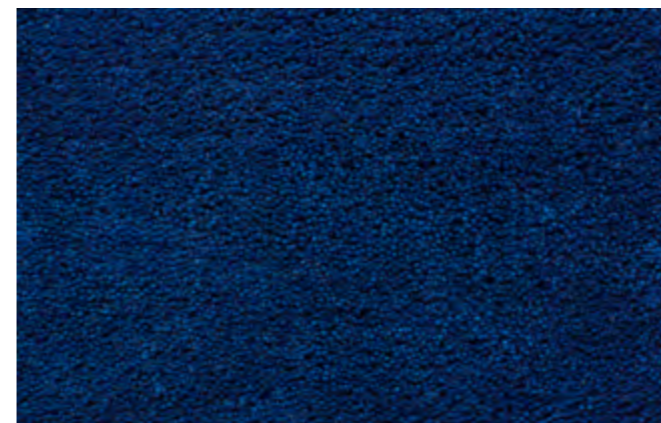
This soft, thick quality high-pile rug is made in the best quality New Zealand wool with a carefully selected palette of warm and cool neutrals and bursts of midnight blue and ochre.



1111 OFF WHITE



1616 GREY



2929 MIDNIGHT BLUE



3232 OCHRE

Lotus

Design Lisbet Friis

Hand-woven rug in New Zealand wool and linen

170x240, 200x300 cm

Made to measure

With a well-balanced chequer design in a stunning colour range of dark blue, aqua marine, grey and mahogany, the Lotus design introduces a quality that pushes the boundaries. Advanced craftsmanship, techniques and linen blended with the wool have made it possible to create a high quality rug with a three dimensional shimmering surface.



1615 GREY/BLACK



1642 GREY/MAHOGANY



1715 BLUE/BLACK



1742 BLUE/MAHOGANY





Tilia

Design Lisbet Friis

Hand-woven rug in New Zealand wool and linen

170x240, 200x300 cm

Made to measure

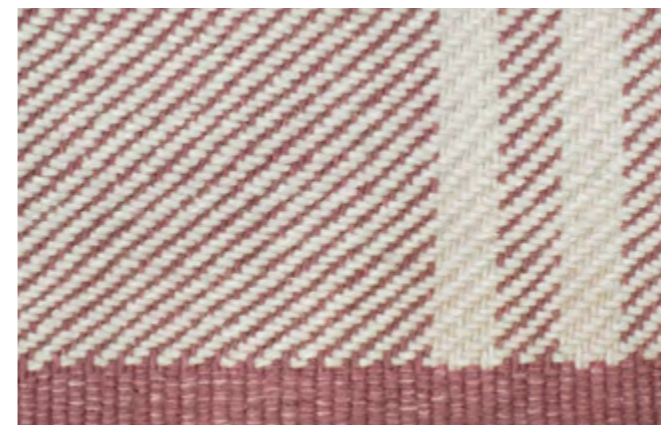
This very clean, simple and light design adds a calm colour touch in any living room or bedroom. The bright yellow, blue, dark nude and dusty green look sharp in an elegant way. Almost pure white New Zealand wool on the surface creates a distinct and elegant shimmering play with the underlining colours and the mixed in linen.



1710 BLUE/WHITE



2310 YELLOW/WHITE



3010 DARK NUDE/WHITE



3710 DUSTY GREEN/WHITE

Poppy

Design Lisbet Friis

Hand-woven rug in New Zealand wool and linen on cotton warp, reversible

80x240, 140x200, 170x240, 200x300 cm

Made to measure

Fresh colour splashes of yellow, nude and soft blue mixed with beige bring a bit of fun to this thin and tight hand-woven rug in wool and linen. This design is fresh and lights up the room and the neutral base in all three colour variations makes sure it's not too delicate and easy to look after.



2312 YELLOW/BEIGE



3812 LIGHT BLUE/BEIGE



3012 NUDE/BEIGE





Nigella

Design Lisbet Friis

Hand-woven rug in New Zealand wool on cotton warp, reversible

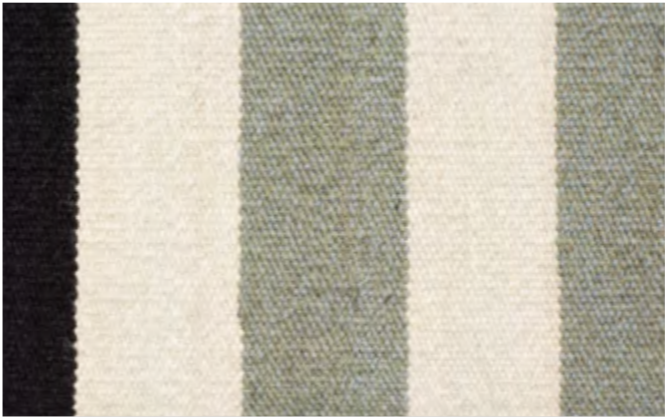
90x250, 140x200, 170x240, 200x300 cm

Made to measure

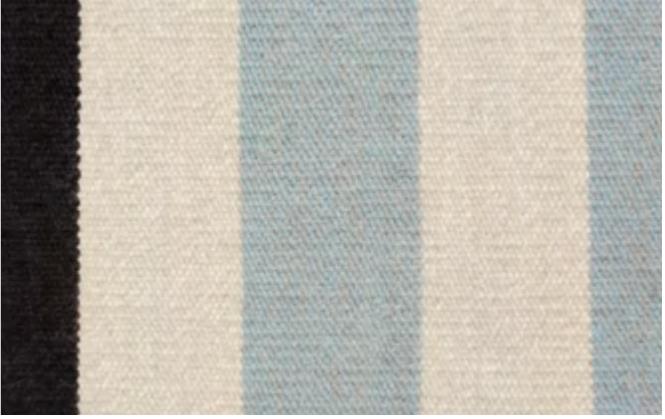
With a black edge and wider stripes this hand-woven rug in New Zealand wool is a softer version of the statement Rosemary design with the red stripe. The look is a clean-lined understated classic and quiet with muted tones creating a soft transition between the two colours.



1416 CHARCOAL/GREY



1816 GREEN/GREY



3816 LIGHT BLUE/GREY

Rosemary

Design Lisbet Friis

Hand-woven rug in New Zealand wool on cotton warp, reversible

90x250, 140x200, 170x240, 200x300 cm

Made to measure

Bold yet clean and elegant - the red stripe makes this statement design stand out in any home without compromising on our design core - quality and simplicity. Each stripe is spun out of two threads, and this rug is a prime example of the attention that goes into every part of our process.



1512 BLACK/BEIGE



1522 BLACK/MAUVE



1627 GREY/LIGHT GREY





Daphne

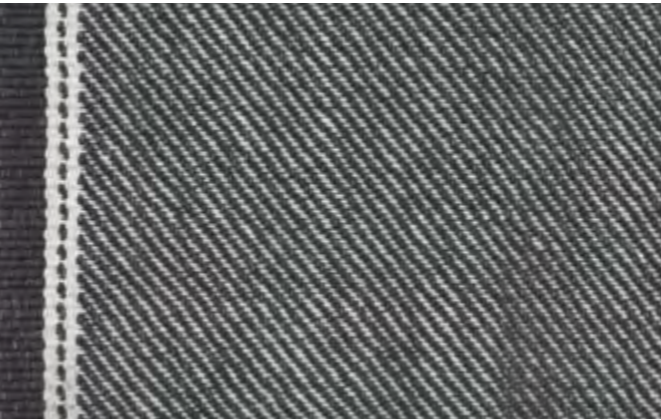
Design Lisbet Friis

Hand-woven rug in New Zealand wool and linen

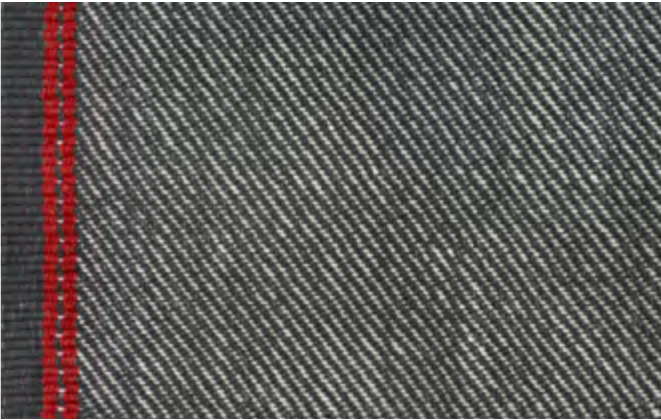
170x240, 200x300 cm

Made to measure

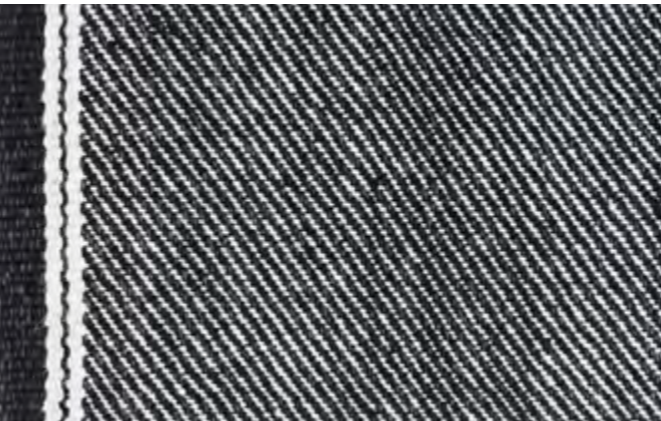
This classic and sophisticated design is made to create a stylish grounded feeling in any room. It's a slightly toned down version of the popular Rosemary rug and gets the extra touch from the special mix of wool and linen. The striking red or white stripe finishes of a quiet and beautiful two-toned rug, which is very durable and will wear with a subtle shine.



1410 CHARCOAL/WHITE



1419 CHARCOAL/RED



1510 BLACK/WHITE



2719 LIGHT GREY/RED

Camelia

Design Lisbet Friis

Hand-woven rug in New Zealand wool and linen

170x240, 200x300 cm

Stunning on its own and a stylish addition in most settings. With the asymmetrical square pattern, this twill woven rug in New Zealand wool and linen fills a room with a creative graphic pattern and deep stunning colours. These features come from the thick quality of the wool and the refined depth of the linen. Primula and Salvia rugs come in the same quality.





Primula

Design Lisbet Friis

Hand-woven rug in New Zealand wool and linen

170x240, 200x300 cm

Made to measure

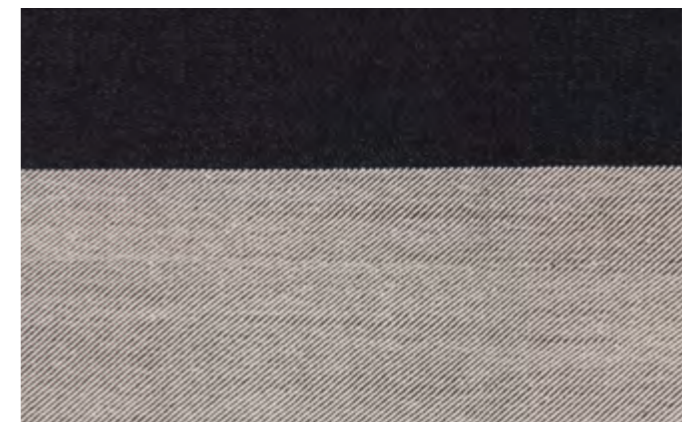
Classic, graphic and beautiful - A thick rug in the special twill weave, which together with linen creates a gorgeous matte surface amplifying the simplicity in the definitive design and works well in all modern homes and especially complements classic design furniture.



1411 CHARCOAL/OFF WHITE



2911 MIDNIGHT BLUE/OFF WHITE



1511 BLACK/OFF WHITE

Salvia

Design Lisbet Friis

Hand-woven rug in New Zealand wool and linen

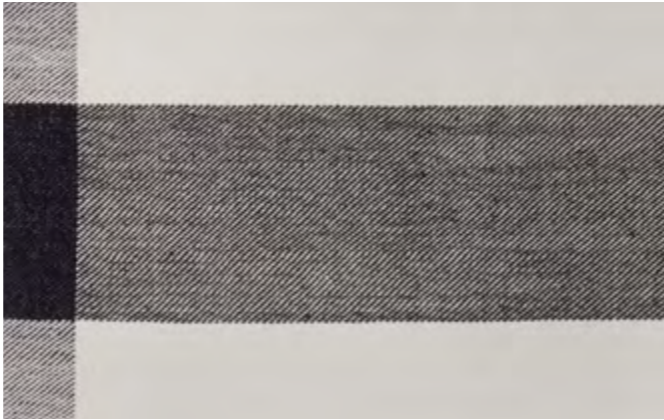
170x240, 200x300 cm

Made to measure

A very clean and classic design with a subtle twist. The stripes are finished off with a graphic square effect. Using the unique twill weave with New Zealand wool and pure linen gives the structure an elegant touch. The twill weave brings out a refined almost three-dimensional depth.



1411 CHARCOAL/OFF WHITE



1511 BLACK/OFF WHITE



1711 BLUE/OFF WHITE



2911 MIDNIGHT BLUE/OFF WHITE



Heimdal

Design Jens Landberg Schröder

Hand-woven rug in New Zealand wool on cotton warp, reversible

80x240, 140x200, 170x240, 200x300 cm

Made to measure

A simple, classic rug made using the purest, hand-spun New Zealand wool. The textural depth and natural hues create a captivating and warm shimmering and make this rug perfect for any modern home cultivating natural simplicity.



1512 BLACK/BEIGE



1614 GREY/CHARCOAL





Helga

Design Jens Landberg Schröder

Hand-woven rug in New Zealand wool on cotton warp, reversible

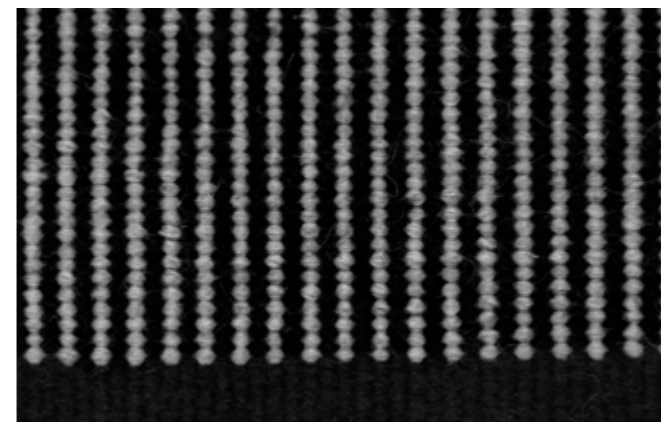
80x240, 140x200, 170x240, 200x300 cm

Made to measure

Stripes on stripes – this hand-woven kilim in New Zealand wool has an interesting and simple spin on the classic striped rug. The long lines have been broken by thicker crossing stripes creating a very calm and defined look.



1412 CHARCOAL/BEIGE



1416 CHARCOAL/GREY

Underlay

Structure: PES/Glass fibre yarn coated on both sides with a special anti-slip PVC-foam.

High quality underlay avoids rugs from slipping on smooth floors. The underlay is comfortable to walk on, offers impact sound insulation and protects your rug from premature wear. If flooring is treated with water-based lacquers, allow at least 3 months full drying time before using this product. Only suitable on floorings treated with solvent-free sealants. No adhesion when wet. Thickness app. 2,5 mm.

90X240, 130X190, 165X240, 190X290, 240x340 CM



How to care

We always recommend using an underlay to extend the life of the rug. An underlay ensures that the rug remains in a fixed position and reduces the risk of any staining. Most of our kilim

rugs are reversible. We recommend that you turn the rug over every six months. Do not place the rug in direct sunlight.

CARE INSTRUCTIONS – RUGS OF WOOL, LINEN AND VISCOSE

Daily cleaning:

Vacuum the rug as needed. Never vacuum the rug with the brushes of the vacuum cleaner nozzle in the extended position.

You can also give the rug a gentle shake outside. Do not beat the rug.

Spot cleaning, only woolen rugs:

Dab the spot very gently with a damp cloth soaked in carbonated water.

More thorough cleaning:

We recommend professional cleaning.

CARE INSTRUCTIONS – RUGS OF PAPER YARN

Vacuum cleaning is normally sufficient for cleaning the carpet. Never vacuum your rug with the brushes of your vacuum cleaner nozzle in the extended position.

This carpet has undergone water & stain resistant treatment. Coffee spills or other liquid spills should be removed immediately with a soft cloth, towel or napkin.

Since these rugs are made of special paper suited for home use, you can even use a small amount of cleaning solution (no bleach or detergent) and little water (not hot) to clean the spot. Food stains can be carefully scrapped off with a sharp object, such as table knife. Be careful not to damage or cut the paper twine.

Airing the carpet:

Do not beat or shake the rug. Simply lay it out on a flat surface.

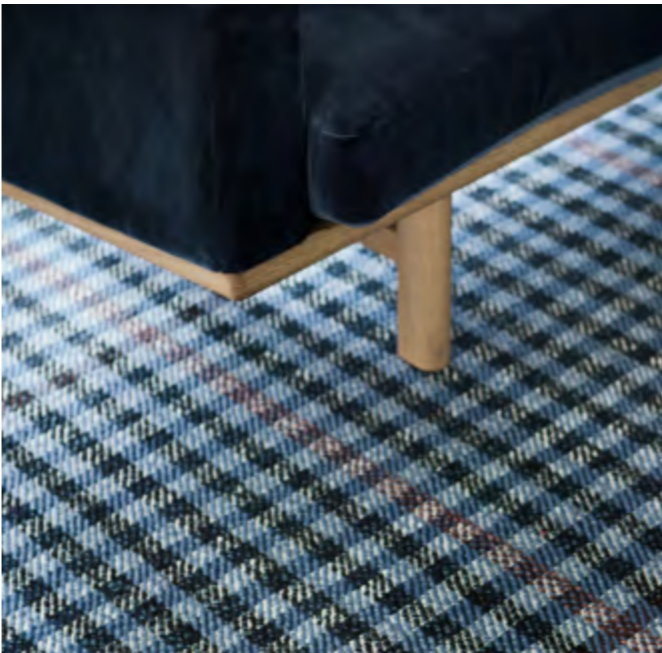
Made to measure service

If you need the perfect rug to fit a specific spot in your home, we have a made to measure service available for the majority of our designs.

As all our rugs are unique and handmade, the size can vary slightly from the ordered size (+/- 4 %). A bespoke rug can be delivered within a maximum of four months. For a surcharge it's possible to get delivery in just 10 weeks.

Please note, that you will be invoiced for a minimum of two m2 if you order a smaller rug. For round shaped rugs an additional 20% will be added to the fee.

Some of our designs are unavailable as circular rugs or in the largest sizes (4,5 x 10 m), however please contact us with any requests.



Certificates



BS EN 13501-1 BFL-S1



BS EN 14215:2013
CLASS 22 GENERAL
DOMESTIC USE



BS EN 14215:2013
CLASS 23 HEAVY
DOMESTIC USE

IRIS
VERONICA
MYRTUS
LOTUS
DAPHNE
TILIA
ERICA
VIOLA
PRIMULA
CAMELIA
FENRIS
GIMLE
SALVIA
BALDER
ELLI
POPPY
GIMLE
NEW FREJA
TANNE
ROSEMARY
NIGELLA

LOTUS
DAPHNE
TILIA
PRIMULA
CAMELIA
FENRIS
GIMLE

IRIS
VERONICA
MYRTUS
FAGUS
BETULA
ULMUS
ERICA
VIOLA
SALVIA
BALDER
ELLI
POPPY
NEW FREJA
TANNE
ROSEMARY
NIGELLA



Thanks

TO ALL OF YOU

Nomess
Kristina Dam Studio
FLOS Scandinavia
Kristian Krogh
Meyer Lavigne
Raawii
Louise Roe
By Lassen
WULFFWINDING
Skagerak
HAY
Flügger
Getama
A hint of neon
Edition Copenhagen
Ferm Living
New works
Nyt i Bo
One Collection
Overgaard & Dyrman
Please wait to be seated
RO Collection
and special thanks to KLASSIK

PHOTOGRAPHER - Bjarni B. Jacobsen
STYLING - Laura Scheuer Trøstrup / reformliving.dk
GRAPHIC PRODUCTION - Graphic Unit

Fabula Living ApS, Teglstrupvej 33, DK-2100 København Ø
+45 2233 3966, info@fabulaliving.dk, www.fabulaliving.dk

Showroom, Frederiksgade 1, 3., DK-1265 København K
Opening hours Tuesday to Thursday 10:00-16:00

We accept no liability for designs, sizes and colours that are no longer available.
We accept no liability for any inaccuracy in terms of colour reproduction in the catalogue.
Most of our rugs are handmade and there is a variation of size of up to +/-4%
Irregularities in colour and weaving are characteristics of hand-made rugs.

Fabula Living creates high quality hand-made
contemporary rugs blending a strong Scandinavian style and
tradition with the ancient techniques of weaving